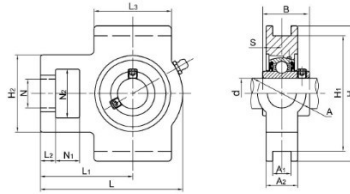


# UCT 系列



轴承单元型号	轴承型号	轴承座型号	轴径		临界尺寸 (mm)														重量 (Kg)		
			in.	mm	o	g	p	q	s	b	k	e	a	w	l	j	r	h		Bi	n
UCT201-8	UC201-8	T204	1/2	-	16	10	51	32	19	51	12	76.2	89	94	21	32	33	61	31	12.7	0.77
UCT202-10	UC202-10	T204	5/8	-	16	10	51	32	19	51	12	76.2	89	94	21	32	33	61	31	12.7	0.77
UCT204	UC204	T204	-	20	16	10	51	32	19	51	12	76.2	89	94	21	32	33	61	31	12.7	0.77
UCT204-12	UC204-12	T204	3/4	-	16	10	51	32	19	51	12	76.2	89	94	21	32	33	61	31	12.7	0.77
UCT205	UC205	T205	-	25	16	10	51	32	19	51	12	76.2	89	97	24	32	35	62	34	14.3	0.86
UCT205-14	UC205-14	T205	7/8	-	16	10	51	32	19	51	12	76.2	89	97	24	32	35	62	34	14.3	0.86
UCT205-15	UC205-15	T205	15/16	-	16	10	51	32	19	51	12	76.2	89	97	24	32	35	62	34	14.3	0.86
UCT205-16	UC205-16	T205	1	-	16	10	51	32	19	51	12	76.2	89	97	24	32	35	62	34	14.3	0.86
UCT206	UC206	T206	-	30	16	10	56	37	22	57	12	89	102	113	28	37	43	70	38.1	15.9	1.32
UCT206-17	UC206-17	T206	1-1/16	-	16	10	56	37	22	57	12	89	102	113	28	37	43	70	38.1	15.9	1.32
UCT206-18	UC206-18	T206	1-1/8	-	16	10	56	37	22	57	12	89	102	113	28	37	43	70	38.1	15.9	1.32
UCT206-19	UC206-19	T206	1-3/16	-	16	10	56	37	22	57	12	89	102	113	28	37	43	70	38.1	15.9	1.32
UCT206-20	UC206-20	T206	1-1/4	-	16	10	56	37	22	57	12	89	102	113	28	37	43	70	38.1	15.9	1.32
UCT207	UC207	T207	-	35	16	13	64	37	22	64	12	89	102	129	30	37	51	78	42.9	17.5	1.59
UCT207-20	UC207-20	T207	1-1/4	-	16	13	64	37	22	64	12	89	102	129	30	37	51	78	42.9	17.5	1.59
UCT207-21	UC207-21	T207	1-5/16	-	16	13	64	37	22	64	12	89	102	129	30	37	51	78	42.9	17.5	1.59
UCT207-22	UC207-22	T207	1-3/8	-	16	13	64	37	22	64	12	89	102	129	30	37	51	78	42.9	17.5	1.59
UCT207-23	UC207-23	T207	1-7/16	-	16	13	64	37	22	64	12	89	102	129	30	37	51	78	42.9	17.5	1.59
UCT208	UC208	T208	-	40	19	16	83	49	29	83	16	102	114	144	33	49	56	88	49.2	19	2.3
UCT208-24	UC208-24	T208	1-1/2	-	19	16	83	49	29	83	16	102	114	144	33	49	56	88	49.2	19	2.3
UCT208-25	UC208-25	T208	1-9/16	-	19	16	83	49	29	83	16	102	114	144	33	49	56	88	49.2	19	2.3
UCT209	UC209	T209	-	45	19	16	83	49	29	83	16	102	117	145	35	49	57	88	49.2	19	2.5
UCT209-26	UC209-26	T209	1-5/8	-	19	16	83	49	29	83	16	102	117	145	35	49	57	88	49.2	19	2.5
UCT209-27	UC209-27	T209	1-11/16	-	19	16	83	49	29	83	16	102	117	145	35	49	57	88	49.2	19	2.5
UCT209-28	UC209-28	T209	1-3/4	-	19	16	83	49	29	83	16	102	117	145	35	49	57	88	49.2	19	2.5
UCT210	UC210	T210	-	50	19	16	83	49	29	86	16	102	117	151	37	49	59	92	51.6	19	2.6
UCT210-30	UC210-30	T210	1-7/8	-	19	16	83	49	29	86	16	102	117	151	37	49	59	92	51.6	19	2.6
UCT210-31	UC210-31	T210	1-15/16	-	19	16	83	49	29	86	16	102	117	151	37	49	59	92	51.6	19	2.6
UCT210-32	UC210-32	T210	2	-	19	16	83	49	29	86	16	102	117	151	37	49	59	92	51.6	19	2.6
UCT211	UC211	T211	-	55	25	19	102	64	35	95	22	130	146	171	38	64	65	106	55.6	22.2	4.1
UCT211-32	UC211-32	T211	2	-	25	19	102	64	35	95	22	130	146	171	38	64	65	106	55.6	22.2	4.1
UCT211-34	UC211-34	T211	2-1/8	-	25	19	102	64	35	95	22	130	146	171	38	64	65	106	55.6	22.2	4.1
UCT211-35	UC211-35	T211	2-3/16	-	25	19	102	64	35	95	22	130	146	171	38	64	65	106	55.6	22.2	4.1
UCT212	UC212	T212	-	60	32	19	102	64	35	102	22	130	146	194	42	64	75	119	65.1	25.4	4.8
UCT212-36	UC212-36	T212	2-1/4	-	32	19	102	64	35	102	22	130	146	194	42	64	75	119	65.1	25.4	4.8

## UCT 系列

UCT212-38	UC212-38	T212	2-3/8	-	32	19	102	64	35	102	22	130	146	194	42	64	75	119	65.1	25.4	4.8
UCT212-39	UC212-39	T212	2-7/16	-	32	19	102	64	35	102	22	130	146	194	42	64	75	119	65.1	25.4	4.8
UCT213	UC213	T213	-	65	32	21	111	70	41	121	26	151	167	224	44	70	87	137	65.1	25.4	6.8
UCT213-40	UC213-40	T213	2-1/2	-	32	21	111	70	41	121	26	151	167	224	44	70	87	137	65.1	25.4	6.8
UCT214	UC214	T214	-	70	32	21	111	70	41	121	26	151	167	224	46	70	87	137	74.6	30.2	7
UCT214-43	UC214-43	T214	2-11/16	-	32	21	111	70	41	121	26	151	167	224	46	70	87	137	74.6	30.2	7
UCT214-44	UC214-44	T214	2-3/4	-	32	21	111	70	41	121	26	151	167	224	46	70	87	137	74.6	30.2	7
UCT215	UC215	T215	-	75	32	21	111	70	41	121	26	151	167	232	46	70	92	140	77.8	33.3	7.8
UCT215-47	UC215-47	T215	2-15/16	-	32	21	111	70	41	121	26	151	167	232	46	70	92	140	77.8	33.3	7.8
UCT215-48	UC215-48	T215	3	-	32	21	111	70	41	121	26	151	167	232	46	70	92	140	77.8	33.3	7.8