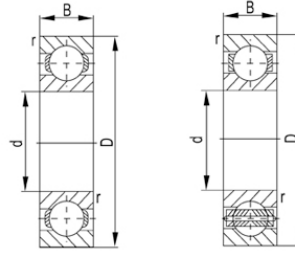
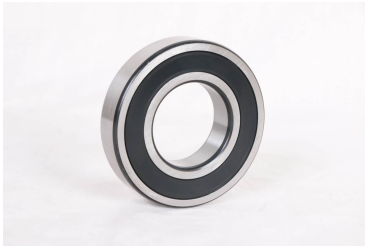


62300 系列



轴承型号	尺寸 [mm]				基本额定功率(kN)		Mass
	d	D	B	rs min	动态(Cr)	静态(Cor)	Kg
62301	12	37	17	-	-	-	-
62302	15	42	17	-	-	-	-
62303	17	47	19	-	-	-	-
62304	20	52	21	-	-	-	-
62305	25	62	24	-	-	-	-
62306	30	72	27	-	-	-	-
62307	35	80	31	-	-	-	-
62308	40	90	33	-	-	-	-
62309	45	100	36	-	-	-	-
62310	50	110	40	-	-	-	-