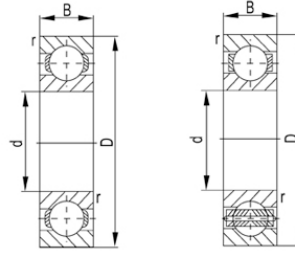
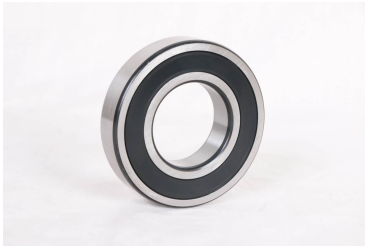


62200 系列



| 轴承型号 | 尺寸 [mm] | | | | 基本额定功率(kN) | | Mass |
|-------|---------|----|----|--------|------------|---------|-------|
| | d | D | B | rs min | 动态(Cr) | 静态(Cor) | Kg |
| 62201 | 12 | 32 | 14 | 1 | 6.82 | 3.06 | 0.053 |
| 62202 | 15 | 35 | 14 | 1 | 7.64 | 3.72 | 0.065 |
| 62203 | 17 | 40 | 16 | 1 | 9.57 | 4.79 | 0.096 |
| 62204 | 20 | 47 | 18 | 1.5 | 12.84 | 6.65 | 0.145 |
| 62205 | 25 | 52 | 18 | 1.5 | 14.02 | 7.88 | 0.172 |
| 62206 | 30 | 62 | 20 | 1.5 | 19.46 | 11.31 | 0.275 |
| 62207 | 35 | 72 | 23 | 2 | 25.67 | 15.3 | 0.41 |
| 62208 | 40 | 80 | 23 | 2 | 29.52 | 18.14 | 0.616 |
| 62209 | 45 | 85 | 23 | 2 | 31.67 | 20.68 | 0.625 |
| 62210 | 50 | 90 | 23 | 2 | 35.07 | 23.18 | 0.726 |